

**SMITHS MOTOR CYCLE EQUIPMENT**

**1959**

THREE-WHEELERS, "BUBBLE" CARS, INVALID CHAIRS — see back cover

# SMITHS

## Motor Cycle Equipment — 1959

Make	Model & Description	Speedometer		Rev Indicator	Flexible Drive †		Gear Box	Gear Box Pinion	Gear Ring	Speedometer Bracket	K.L.G. Sparking Plugs	Petro-Flex
		Miles	Kilos		Complete	Length						
A.J.S.	14 248cc	SN. 3103/83	SN. 3103/84		DF. 1110/22	5'2"	BG. 5330/227				FE. 80**	PFP. 503/12
	14CS 248cc	SN. 3103/85	SN. 3103/86		DF. 1110/22	5'2"	BG. 5330/227				FE. 80**	
	16 347cc	S. 467/163/N*	S. 467/167/N*		DF. 1110/22	5'5"	52283/66/1				FE. 80**	
	16C 347cc	S. 491/3/N *	S. 491/7/N *		DF. 1110/22	5'5"	52283/66/1				FE. 80**	
	16CS 348cc	S. 491/3/N *	S. 491/7/N *		DF. 1110/22	5'5"	52283/66/1				FE. 80**	
	7R O.H.C. 349cc			ATRC. 2652/N	DF. 1111/15	1'10"	70521/8				***	
	18 498cc	S. 467/163/N*	S. 467/167/N*		DF. 1110/22	5'5"	52283/66/1				FE. 80**	
	18CS 497cc	S. 491/3/N *	S. 491/7/N *		DF. 1110/22	5'5"	52283/66/1				FE. 80**	
	20 Twin 498cc	S. 467/163/N*	S. 467/167/N*		DF. 1110/22	5'5"	52283/66/1				FE. 80**	
	20 Twin 498cc			ARC. 95/1	DF. 1111/15	2'2½"	70549/1				FE. 80**	
	20 De Luxe Twin 498cc	S. 467/163/N*	S. 467/167/N*		DF. 1110/22	5'5"	52283/66/1				FE. 80**	
	20 De Luxe Twin 498cc			ARC. 95/1	DF. 1111/15	2'2½"	70549/1				FE. 80**	
	20CS Twin 498cc	S. 491/3/N *	S. 467/167/N*		DF. 1110/22	5'5"	52283/66/1			25578/1	FE. 80**	
	20CSR Twin 498cc	S. 467/163/N*	S. 467/167/N*		DF. 1110/22	5'5"	52283/66/1				FE. 80**	
	31 Twin 646cc	S. 467/163/N*	S. 467/167/N*		DF. 1110/22	5'5"	52283/66/1				FE. 80**	
	31 Twin 646cc			ARC. 95/1	DF. 1111/15	2'2½"	70549/1				FE. 80**	
	31 De Luxe Twin 646cc	S. 467/163/N*	S. 467/167/N*		DF. 1110/22	5'5"	52283/66/1				FE. 80**	
	31 De Luxe Twin 646cc			ARC. 95/1	DF. 1111/15	2'2½"	70549/1				FE. 80**	
31CS Twin 646cc	S. 491/3/N *	S. 491/7/N *		DF. 1110/22	5'5"	52283/66/1				FE. 80**		
31CSR Twin 646cc	S. 467/163/N*	S. 467/167/N*		DF. 1110/22	5'5"	52283/66/1				FE. 80**		
AMBASSADOR	Popular 174cc	SN. 3103/55	SN. 3103/56		DF. 1111/02	2'10¼"					F. 80	PFP. 503/9
	Envoy 197cc	SN. 3103/28	SN. 3103/29		DF. 1111/02	3'1"					F. 80	PFP. 503/9
	Super S 249cc	S. 467/217/N	S. 467/221/N		DF. 1111/02	3'1"					F. 80	PFP. 503/9
ARIEL	LH Colt 197cc	S. 630/N	S. 630/K/N		DF. 1110/22	4'5½"	52283/64/1				FE. 70	PFP. 504/6 PFP. 504/6 PFP. 504/6
	Leader Twin 249cc **** (Non-Trip Speedometer)	SC. 1301/00	SC. 1301/01		DF. 1111/19	3'1"					FE. 80	
	Leader Twin 249cc **** (Trip Speedometer)	SC. 5309/00	SC. 5309/01		DF. 1111/19	3'1"					FE. 80	
	NH Red Hunter 347cc	S. 467/195/N	S. 467/199/N		DF. 1111/15	3'7"					FE. 70	
	HT 3 Red Hunter 347cc	S. 659/N	S. 659/K/N		DF. 1110/20	4'9"	52283/68/1				FE. 70	
	VH Red Hunter 497cc	S. 467/195/N	S. 467/199/N		DF. 1111/15	3'7"					FE. 70	
	HS Red Hunter III 497cc	S. 467/195/N	S. 467/199/N		DF. 1111/15	3'7"					FE. 70	

† For Separate Inner & Outer Flexible Drives See Chart I (Page 9)  
 \* For Speedometer with Alternative Speed Range See Chart II (Page 9)  
 \*\* 3 Earth-Point Version

‡ Optional Equipment  
 \*\*\* Recommendation on Request According to Tune & Fuel etc.  
 \*\*\*\* Optional Lever Clock CL. 2104/00 also available.

ARIEL (Cont'd)	HT 5 Red Hunter 497cc	S.659/N	S.659/K/N		DF.1110/20	4'9"	52283/68/1			FE.70	
	PH Huntmaster 646cc	S.467/195/N	S.467/199/N		DF.1111/15	3'7"				F.70	PPF.504/14
	4G Square Four 997cc	S.467/195/N	S.467/199/N		DF.1111/15	3'11"				FE.70	
BOND	P1 Scooter 148cc	SN.3103/71			DF.1111/02	3'8"				F.80	
	P2 Scooter 197cc	SN.3103/65			DF.1111/02	3'8"				F.80	
B.S.A.	Dandy 70cc (Leg Shield Fitting)	SN.3118/00	SN.3118/01		DF.7302/01	2'1"	BG.5322/001			F.70	
	Dandy 70cc (Headlamp Fitting)	SM.3601/00	SM.3601/01		DF.8231/00	2'8"	BG.5320/001			F.70	
	New Hudson Moped	SM.3100/00			DF.8231/02	1'11"	BG.5337/211			F.70	
	D1 Bantam 123cc	S.630/N	S.630/K/N		DF.1110/21	4'8"	52283/64/1			F.70	
	D5 Bantam Super 174cc	SN.3103/79	SN.3103/80		DF.1110/21	4'8"	52283/64/1			F.70	
	D7 Bantam Super 174cc	SN.3103/79	SN.3103/80		DF.1110/21	4'8"	52283/64/1			F.70	
	B1 Sunbeam 174cc	SN.3103/78			DF.1106/14	4'10"				F.100	
	B2 Sunbeam Twin 249cc (O.H.V. 6 Volt)	SN.3103/78	SN.3103/88		DF.1106/14	4'10"				F.70	
	B2/S Sunbeam Twin 249cc (C.H.V. 12 Volt)	SN.3103/77	SN.3103/87		DF.1106/14	4'10"				F.70	
	C15 250 Star 249cc	SN.3103/67	SN.3103/68		DF.1110/26	4'9"				FE.70	
	B31 Solo 348cc	SC.3305/04	SC.3305/05		DF.1110/20	3'8"				F.70	PPF.506/14
	B31 Sidecar 348cc	SC.3305/06	SC.3305/07		DF.1110/20	3'8"				F.70	PPF.506/14
	B33 499cc	SC.3305/04	SC.3305/05		DF.1110/20	3'8"				F.70	PPF.506/14
	B34 Gold Star Clubman 499cc	S.433/3/N*	S.433/7/N*		DF.1110/21	3'5"				FE.70	PPF.506/14
	B34 Gold Star Clubman 499cc			RC.83	DF.1111/15	3'2"	BG.1508/04			FE.70	PPF.506/14
	B34 Gold Star Clubman 499cc (N.America Only)			RC.83	DF.1111/15	3'2"	BG.1508/04			FE.70	PPF.506/14
	B34 Gold Star Scrambler 499cc	S.525/3/N*	S.525/7/N*		DF.1110/21	3'5"				FE.70	PPF.506/14
	B34 Gold Star Scrambler 499cc			RC.83	DF.1111/15	3'2"	BG.1508/04			FE.70	PPF.506/14
	B34 Gold Star Scrambler 499cc (N.America Only)	S.525/3/N*	S.525/7/N*		DF.1110/20	3'10 <sup>3</sup> / <sub>4</sub> "				FE.70	PPF.506/14
	B34 Gold Star Scrambler 499cc (N.America Only)			RC.83	DF.1111/15	3'2"	BG.1508/04			FE.70	PPF.506/14
	A7 Twin Solo 497cc	SC.3305/04	SC.3305/05		DF.1110/20	3'8"				F.70	PPF.506/18
	A7 Twin Sidecar 497cc	SC.3305/06	SC.3305/07		DF.1110/20	3'8"				F.70	PPF.506/18
	A7 Shooting Star Twin Solo 497cc	SC.3305/04	SC.3305/05		DF.1110/20	3'8"				FE.100	PPF.506/18
	A7 Twin Sidecar 497cc	SC.3305/06	SC.3305/07		DF.1110/20	3'8"				FE.100	PPF.506/18
	A10 Golden Flash Twin Solo & Sidecar 646cc	SC.3305/04	SC.3305/05		DF.1110/20	3'8"				F.70	PPF.506/18
	A10 Super Rocket Twin 646cc (With Cowl)	SC.3305/04	SC.3305/05		DF.1110/20	3'8"				F.100	PPF.506/18
	A10 Super Rocket Twin 646cc (With Cowl)			RC.83	DF.1111/15	3'2"	BG.1508/04				
A10 Super Rocket Twin 646cc (Without Cowl)	S.546/3/N*	S.546/7/N*		DF.1110/20	3'10 <sup>3</sup> / <sub>4</sub> "				F.100	PPF.506/18	

† For Separate Inner & Outer Flexible Drives See Chart I (Page 9)  
 \* For Speedometer with Alternative Speed Range See Chart II (Page 9)  
 \*\* 3 Earth-Point Version

† Optional Equipment  
 \*\*\* Recommendation on Request According to Tune & Fuel etc.

Make	Model & Description	Speedometer		Rev Indicator	Flexible Drive †		Gear Box	Gear Box Pinion	Gear Ring	Speedometer Bracket	K.L.G. Sparking Plugs	Petro-Flex
		Miles	Kilos		Complete	Length						
B.S.A. (Cont'd)	A10 Super Rocket Twin 646cc (Without Cowl)	S.546/3/N *		RC.83	DF.1111/15	3'2"					F.100	PFP.506/18
				DF.1110/20	3'10 <sup>3</sup> / <sub>4</sub> "							
	A10 Super Rocket Twin 646cc (N.America Only)			RC.83	DF.1111/15	3'2"					F.100	PFP.506/18
	A10 Super Rocket Twin 646cc (N.America Only)	S.433/3/N *	S.433/7/N *		DF.1110/21	4'2"					FE.50	
COTTON	Vulcan 197cc	SN.3103/20	SN.3103/22		DF.1111/15	4'6"	34159/1	25226	25225/1		F.80	
	Trials 197cc	S.630/N	S.630/K/N		DF.1111/15	4'6"	34159/1	25226	25225/1		F.80	
	Cotanza 242cc Anzani Engine	SN.3103/20	SN.3103/22		DF.1111/15	4'6"	70458/1	25226	25225		F.70	
	249cc Villiers Engine	SN.3103/20	SN.3103/22		DF.1111/15	3'6"	70458/1	25226	25225		F.80	
	Cotanza 325cc Anzani Engine	SN.3103/20	SN.3103/22		DF.1111/15	4'6"	70458/1	25226	25225		F.70	
	Messenger 325cc Villiers Engine	S.467/203/N	S.467/127/N		DF.1111/15	3'6"					F.80	
DAYTON	Flamenco 173cc	SN.3103/89			DF.1111/15	3'9"					F.80	PFP.540/6
	Albatross 225cc	SN.3103/26	SN.3103/84		DF.1111/15	4'3"					F.80	
	Continental Single 247cc	SN.3103/26	SN.3103/84		DF.1111/15	4'3"					F.80	
	Continental Twin 249cc	SN.3103/26	SN.3103/84		DF.1111/15	4'3"					F.80	
D.K.R.	Dove 147cc	SN.3103/63			DF.1111/00	3'0"	BG.5117/047				F.80	
	Pegasus 148cc	SN.3103/69			DF.1111/00	3'0"	BG.5117/047				F.80	
	Defiant 197cc	SN.3103/69			DF.1111/00	3'0"	BG.5117/047				F.80	
	Manx 249cc	SN.3103/76			DF.1111/00	3'0"	BG.5117/047				F.80	
D.M.W.	Bambi Scooter 98cc	SN.3103/50	SN.3103/51		DF.1106/14	3'0"	BG.5121/633				F.70	
	Mk.9 197cc	S.664/N	S.664/K/N		DF.1111/15	3'2"					F.80	
	Dolomite II Twin 249cc	SC.3303/09	SC.3303/12		DF.1111/15	3'2"					F.80	
	Mk.10 Trials 249cc	S.659/N	S.659/K/N		DF.1111/15	3'2"	25384	25226	25225/1		F.80	
	Mk.10 Scrambler 249cc	S.659/N	S.659/K/N		DF.1111/15	3'2"	25384	25226	25225/1		F.80	
DOT	200 THX 197cc	S.644/N	S.644/K/N		DF.1111/15	3'3"					***	
	200 THDX 197cc	S.644/N	S.644/K/N		DF.1111/15	3'3"					***	
	250 THX 249cc	S.644/N	S.644/K/N		DF.1111/15	3'3"					***	
	250 THDX 249cc	S.644/N	S.644/K/N		DF.1111/15	3'3"					***	
	200 WR Trials 197cc	S.644/N	S.644/K/N		DF.1111/15	3'3"					***	
	250 WR Trials 249cc	S.644/N	S.644/K/N		DF.1111/15	3'3"					***	
	200 SH 197cc	S.644/N	S.644/K/N		DF.1111/15	3'3"					***	
	250 SH 249cc	S.644/N	S.644/K/N		DF.1111/15	3'3"					***	
	200 SCH 197cc	S.644/N	S.644/K/N		DF.1111/15	3'3"					***	
	250 SCH 249cc	S.644/N	S.644/K/N		DF.1111/15	3'3"					***	
	Sportsmans Roadster 349cc	S.467/243/N	S.467/247/N		DF.1111/15	5'0"	70458	34140	25225		***	

† For Separate Inner & Outer Flexible Drives See Chart I (Page 9)  
 \* For Speedometer with Alternative Speed Range See Chart II (Page 9)  
 \*\* > Earth-Point Version

‡ Optional Equipment  
 \*\*\* Recommendation on Request According to Tune & Fuel etc.

DUNKLEY	Popular 49cc	SM.3100/00			DF.8231/02	2'0"	BG.5330/227			F.50
	S.65 64cc	SM.3100/00			DF.8231/02	2'0"	BG.5330/227			F.50
	Whippet 61cc	SN.3110/06			DF.7302/01	2'2"	BG.5322/021			F.50
	Whippet Sports 64cc	SM.3100/00			DF.8231/02	1'9½"	BG.5348/421			F.50
EXCELSIOR	CA9 Consort 98cc	S.531/N	S.531/K/N		DF.1110/20	3'9½"	52283/62/1			F.70
	SB1 Skutabike 98cc	S.531/N	S.531/K/N		DF.1110/20	3'9½"	52283/62/1			F.70
	U9 Universal 147cc	S.634/N	S.634/K/N		DF.1110/20	4'5½"	52283/62/1			F.70
	U9R Universal 147cc	SN.3103/20	SN.3103/22		DF.1110/20	4'5½"	52283/62/1			F.70
	TT4 Talisman 246cc	SN.3103/20	SN.3103/22		DF.1110/20	4'5½"	52283/62/1			FE.70
	S8 Super Talisman 328cc	SN.3103/20	SN.3103/22		DF.1110/20	4'5½"	52283/62/1			FE.70D
S9 Special Talisman 328cc	S.467/121/N	S.467/125/N		DF.1110/20	4'8½"	52283/62/1			FE.70D	
FRANCIS & BARNETT	78 Plover 147cc	SN.3103/83	SN.3103/84		DF.1110/20	4'7"	BG.5100/227			F.70
	79 Light Cruiser 171cc	SN.3103/83	SN.3103/84		DF.1110/21	4'8"	52283/64/7			FE.70
	81 Falcon 197cc	SN.3103/20	SN.3103/22		DF.1110/21	4'8"	52283/64/7			F.80
	80 Cruiser 249cc	SN.3103/55	SN.3103/56		DF.1110/24	4'9"	52283/64/7			FE.70
	83 Trials 249cc	SC.1102/06	S.659/K/N		DF.1110/24	4'6"	52283/64/7			
	84 Cruiser 249cc	SN.3103/55	SN.3103/56		DF.1110/24	4'9"	52283/64/7			FE.70
GREEVES	20TA Scottish Trials 197cc	S.661/N			DF.1111/16	4'8"	34159			F.80
	20TAS Scottish Special 197cc	S.661/N			DF.1111/16	4'8"	34159			F.80
	24DB Sports 248cc	SN.3103/55			DF.1111/16	4'8"	34159			F.80
	24TAS Scottish Special 248cc	S.661/N			DF.1111/16	4'8"	34159			F.80
	25DB Sports 249cc	SN.3103/55			DF.1111/16	4'8"	34159			F.80
INDIAN	Fire Arrow (Hounds) Sports 250cc	S.662/N	S.467/63/N *		DF.1110/21	4'6"	52283/6			
	Tomahawk Twin 500cc	S.467/59/N *	S.467/63/N *		DF.1110/21	4'6"	52283/6			
	Tomahawk Twin 500cc			RC.184	DF.1111/15	3'7"	70549/1			
	Woodsman 500cc			RC.83	DF.1110/21	4'6"	BG.5110/00			
	Woodsman 500cc				DF.1111/15	2'4"	70549			
	West Coast Woodsman 500cc	RS.491/3/N*	S.491/7/N *		DF.1110/21	4'6"	52283/6			
	West Coast Woodsman 500cc			RC.83	DF.1111/15	2'4"	70549			
	Chief Twin 700cc			RC.184	DF.1110/21	4'11"	BG.5110/00			
	Chief Twin 700cc				DF.1111/15	3'7"	70549/1			
	Apache Sports Twin 700cc	SC.3303/01	SC.3303/11		DF.1110/21	4'6"	52283/6			F.100
Apache Sports Twin 700cc			RC.184	DF.1111/15	3'7"	70549/1			F.100	
JAMES	L1 Comet 100 98cc	SN.3103/26	SN.3103/38		DF.1110/20	4'7"	BG.5330/227			F.70
	L15 Cadet 150 147cc	SN.3103/26	SN.3103/38		DF.1110/20	4'7"	BG.5330/227			F.70
	L17 Cavalier 172cc	SN.3103/26	SN.3103/38		DF.1110/20	4'7"	BG.5330/227			FE.70
	K7 Captain 197cc	SN.3103/26	SN.3103/38		DF.1110/20	4'7"	BG.5330/227			F.80
	L25 Commodore 249cc	SN.3103/26	SN.3103/38		DF.1110/20	4'7"	BG.5330/227			FE.70
	L25T Commando 249cc	S.611/N	S.611/K/N		DF.1110/20	4'7"	BG.5330/227			F.80

† For Separate Inner & Outer Flexible Drives See Chart I (Page 9)  
 \* For Speedometer with Alternative Speed Range See Chart II (Page 9)  
 \*\* 3 Earth-Point Version.

‡ Optional Equipment  
 \*\*\* Recommendation on Request According to Tune & Fuel etc.

Make	Model & Description	Speedometer		Rev Indicator	Flexible Drive †		Gear Box	Gear Box Pinion	Gear Ring	Speedometer Bracket	K.L.G. Sparking Plugs	Petro-Flex
		Miles	Kilos		Complete	Length						
MATCHLESS	G2 248cc	SN. 3103/83	SN. 3103/84	ATRC. 2652/N	DF. 1110/22	5'2"	BG. 5330/227				FE. 80**	
	G2CS 248cc	SN. 3103/85	SN. 3103/86		DF. 1110/22	5'2"	BG. 5330/227				FE. 80**	
	G3 347cc	S. 467/163/N*	S. 467/167/N*		DF. 1110/22	5'5"	52283/66/1				FE. 80**	
	G3C 347cc	S. 491/3/N *	S. 491/7/N *		DF. 1110/22	5'5"	52283/66/1				FE. 80**	
	G3CS 348cc	S. 491/3/N *	S. 491/7/N *		DF. 1110/22	5'5"	52283/66/1				FE. 80**	
	G50 496cc	S. 467/163/N*	S. 467/167/N*		DF. 1111/15	1'10"	70521/8				***	
	G80 498cc	S. 467/163/N*	S. 467/167/N*		DF. 1110/22	5'5"	52283/66/1				FE. 80**	
	G80CS 497cc	S. 491/3/N *	S. 491/7/N *		DF. 1110/22	5'5"	52283/66/1				FE. 80**	
	G9 Twin 498cc	S. 467/163/N*	S. 467/167/N*		DF. 1110/22	5'5"	52283/66/1				FE. 80**	
	G9 Twin 498cc				DF. 1111/15	2'2½"	70549/1				FE. 80**	
	G9 De Luxe Twin 498cc	S. 467/163/N*	S. 467/167/N*		DF. 1110/22	5'5"	52283/66/1				FE. 80**	
	G9 De Luxe Twin 498cc				DF. 1111/15	2'2½"	70549/1				FE. 80**	
	G9CS Twin 498cc	S. 491/3/N *	S. 491/7/N *		DF. 1110/22	5'5"	52283/66/1				FE. 80**	
	G9CSR Twin 498cc	S. 467/163/N*	S. 467/167/N*		DF. 1110/22	5'5"	52283/66/1				FE. 80**	
	G12 Twin 646cc	S. 467/163/N*	S. 467/167/N*		DF. 1110/22	5'5"	52283/66/1				FE. 80**	
	G12 Twin 646cc				DF. 1111/15	2'2½"	70549/1				FE. 80**	
	G12 De Luxe Twin 646cc	S. 467/163/N*	S. 467/167/N*		DF. 1110/22	5'5"	52283/66/1				FE. 80**	
G12 De Luxe Twin 646cc			DF. 1111/15	2'2½"	70549/1				FE. 80**			
G12CS Twin 646cc	S. 491/3/N *	S. 491/7/N *	DF. 1110/22	5'5"	52283/66/1				FE. 80**			
G12CSR Twin 646cc	S. 467/163/N*	S. 467/167/N*	DF. 1110/22	5'5"	52283/66/1				FE. 80**			
NORMAN	Lido 50cc				DF. 8231/02	2'11½"						
	Nippy 50cc				DF. 8231/02	2'11½"						
	B1S 148cc	SN. 3103/28	SN. 3103/29		DF. 1111/00	4'10"	25224				F. 80	
	B2S Roadster (3 Speed) 197cc	SN. 3103/28	SN. 3103/29		DF. 1111/00	2'9"					F. 80	
	B2S Roadster (4 Speed) 197cc	SN. 3103/28	SN. 3103/29		DF. 1111/00	3'0"					F. 80	
	B2S Sports (3 Speed) 197cc	SN. 3103/28	SN. 3103/29		DF. 1111/00	2'9"					F. 80	
	B2S Sports (4 Speed) 197cc	SN. 3103/43	SN. 3103/44		DF. 1111/00	3'0"					F. 80	
	B2S Comp. 197cc	S. 536/N	S. 538/K/N		DF. 1111/00	2'11"					F. 80	
	B3 Roadster 249cc	SN. 3103/20	SN. 3103/22		DF. 1111/00	3'2"					F. 80	
	B3 Sports 249cc	SN. 3103/20	SN. 3103/22		DF. 1111/00	3'2"					F. 80	
NORTON	Jubilee 250 249cc	SN. 3103/20	SN. 3103/22	ATRC. 2652	DF. 1110/21	5'0"	BG. 5330/247				FE. 100	
	40M 348cc				DF. 1111/15	1'9"	70521/9				***	
	50 348cc	S. 467/203/N	S. 467/207/N		DF. 1110/22	5'7½"	BG. 5100/251				FE. 80	
	ES2 490cc	S. 467/203/N	S. 467/207/N		DF. 1110/22	5'7½"	BG. 5100/251				FE. 80	
	88 Dominator 497cc	S. 467/203/N	S. 467/207/N		DF. 1110/22	5'7½"	BG. 5100/251				FE. 80	
	30M 499cc				DF. 1111/15	1'9"	70521/9				***	
	99 Dominator 597cc	S. 467/203/N	S. 467/207/N		DF. 1110/22	5'7½"	BG. 5100/251				FE. 80	
Nomad 500 600cc (American Markets)	S. 467/187/N*	S. 467/191/N*		DF. 1110/22	5'7½"	BG. 5100/251				FE. 100		

† For Separate Inner & Outer Flexible Drives See Chart I (Page 9)  
 \* For Speedometer with Alternative Speed Range See Chart II (Page 9)  
 \*\* 3 Earth-Point Version.

‡ Optional Equipment  
 \*\*\* Recommendation on Request According to Tune & Fuel etc.



Make	Model & Description	Speedometer		Rev Indicator	Flexible Drive †		Gear Box	Gear Box Pinion	Gear Ring	Speedometer Bracket	K.L.G. Sparking Plugs	Petro-Flex
		Miles	Kilos		Complete	Length						
TRIUMPH (Cont'd)	T20 Tigercub 199cc	SC.1102/11	SC.1102/12		DF.1110/20	4'10"					F.80	
	TW2/S Tigress 249cc	SN.3103/77			DF.1106/02	4'10"					F.70	
	3TA Twenty One 348cc	S.467/227/N	S.467/231/N		DF.1110/20	4'10"	52283/6/3				FE.75	
	5TA Speed Twin 490cc	S.467/227/N	S.467/231/N		DF.1110/20	4'10"	52283/6/3				F.80	
	T100 Tiger 100 498cc	S.467/99/N	S.467/23/N		DF.1106/11	3'8"					FE.100	
	T110 Tiger 649cc	S.467/107/N	S.467/47/N		DF.1106/11	3'8"					FE.100	
	6T Thunderbird 649cc	S.467/107/N	S.467/47/N		DF.1106/12	3'8"					F.80	
	TR6 Trophy 649cc	S.433/3/N *	S.433/7/N *		DF.1106/13	3'8"					FE.100	
	T120 Bonneville 649cc	S.467/107/N	SC.3304/07		DF.1106/11	3'8"					FE.100	
VELOCETTE	LE Mk.III 192cc	SN.3103/20	SN.3103/22		DF.1111/17	2'9"					TEN L.30	
	Valiant Twin 192cc	SN.3103/20	SN.3103/22		DF.1111/17	2'9"					TEN L.100	
	Valiant Vee Line Twin 192cc	SN.3103/20	SN.3103/22		DF.1111/17	2'9"					Ten L.100	
	MAC 349cc	SC.3308/00			DF.1110/22	5'3"	52283/6/3				FE.70	
	Viper 349cc	SC.3308/00			DF.1110/22	5'3"	52283/6/3				FE.100	
	Viper Clubmans 349cc	SC.3308/00			DF.1110/22	5'3"	52283/6/3				FE.100	
	MSS 499cc	SC.3308/00			DF.1110/22	5'3"	52283/6/3				FE.100	
	Venom 499cc	SC.3308/00			DF.1110/22	5'3"	52283/6/3				FE.100	
	Venom Clubmans 499cc	SC.3308/00			DF.1110/22	5'3"	52283/6/3				FE.100	
	Venom Clubmans 499cc			ARC.95	DF.1111/12	3'0"	70521/10				FE.100	
	Venom Sports 499cc	SC.3308/00			DF.1110/22	5'3"	52283/6/3				FE.100	
	Venom Sports 499cc			ARC.95	DF.1111/12	3'0"	70521/10				FE.100	
	Endurance 499cc	SC.3308/00			DF.1110/22	5'3"	52283/6/3				FE.100	

† For Separate Inner & Outer Flexible Drives See Chart I (Page 9)  
 \* For Speedometer with Alternative Speed Range See Chart II (Page 9)  
 \*\* 3 Earth-Point Version.

‡ Optional Equipment  
 \*\*\* Recommendation on Request According to Tune & Fuel etc.

## Chart I FLEXIBLE DRIVES

Flexible Drive (Complete)	Inner Flexible Drive (Only)	Outer Flexible Drive (Only)
DF.1106/02	DI.1110/00	DO.1106/00
DF.1106/11	DI.1124/00	DO.1106/11
DF.1106/12	DI.1124/00	DO.1106/12
DF.1106/13	DI.1124/00	DO.1106/13
DF.1106/14	DI.1124/00	DO.1106/14
DF.1110/20	DI.1124/00	DO.1110/20
DF.1110/21	DI.1124/00	DO.1110/21
DF.1110/22	DI.1124/00	DO.1110/22
DF.1110/24	DI.1124/00	DO.1110/24
DF.1110/30	DI.1124/00	DO.1110/30
DF.1111/00	DI.1110/02	DO.1111/00
DF.1111/02	DI.1110/02	DO.1111/02
DF.1111/12	DI.1111/00	DO.1111/08
DF.1111/15	DI.1111/00	DO.1111/09
DF.1111/16	DI.1111/00	DO.1111/10
DF.1111/17	DI.1111/00	DO.1111/11
DF.1111/19	DI.1111/00	DO.1111/13
DF.1111/22	DI.1111/00	DO.1111/16
DF.7302/01	DI.7323/00	DO.7302/00
DF.8231/02		(Non Detachable)

Chart I, above, shows the code numbers of the separate Inner and Outer Flexible Drives which form the complete Flexible Drives listed in the specification section of this booklet.

## Chart II ALTERNATIVE SPEEDOMETERS

MILES		KILOS	
80 m.p.h.	120 m.p.h.	140 k.p.h.	180 k.p.h.
S.433/1/N	S.433/3/N	S.433/5/N	S.433/7/N
S.467/57/N	S.467/59/N	S.467/61/N	S.467/63/N
S.467/65/N	S.467/67/N	S.467/69/N	S.467/71/N
S.467/161/N	S.467/163/N	S.467/165/N	S.467/167/N
S.467/177/N	S.467/179/N	S.467/181/N	S.467/183/N
S.467/185/N	S.467/187/N	S.467/189/N	S.467/191/N
S.491/1/N	S.491/3/N	S.491/5/N	S.491/7/N
S.525/1/N	S.525/3/N	S.525/5/N	S.525/7/N
S.546/1/N	S.546/3/N	S.546/5/N	S.546/7/N

Chart II, above, shows instruments of a different speed range which are suitable as alternatives to those marked with an asterisk in the specification section of this booklet.

# SMITHS

## Motor Cycle Equipment

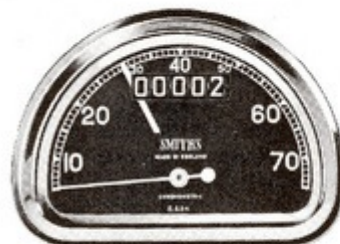
Illustrated on these pages is a representative range of the most popular types of motor cycle equipment manufactured by Smiths.



### Speedometer 3" Chronometric Type

The movement is contained in a heavy pressed steel case, specially treated internally and externally against rust. The case is finished in black enamel and the screwed-on bezel is polished chromium plate. Also available with flange bezel and cadmium finished case for nacelle or headlamp installation.

Dial black with white figures and available with or without internal illumination.



### "D" Shaped Speedometer

Chronometric Type, for Lightweight Motor Cycles.

Finished in a rust-proofed, black enamelled case with clear white figures on a black dial. Also available with flange bezel for nacelle or headlamp installation.

The internal illumination provides a soft diffused light over the dial and pointer.



### 60 mm. Speedometer

Nemag movement also for Lightweight Motor Cycles.

Available with strap or handlebar fixing.

The flat spun-over bezel of polished chrome gives complete weather protection around the glass.

A variety of dial colourings is available.



### 3" Revolution Indicators

Chronometric movement.

Black dial, white figures and pointer, chrome bezel.

Right angle drive can be built in. A maximum hand may be incorporated if required.

Maximum revolutions per minute, ratio and rotation available in any combination of the following:

MAX. R.P.M. 8,000 9,000 10,000 12,000  
RATIO 2:1 4:1 4:1 4:1  
ROTATION Clockwise or anti-clockwise

All Smiths motor cycle speedometers are available to register either miles or kilometers per hour.



Make	Model & Description	Speedometer		Rev Indicator	Flexible Drive †		Gear Box	Gear Box Pinion	Gear Ring	Speedometer Bracket	K.L.G. Sparking Plugs	Petro-Flex	
		Miles	Kilos		Complete	Length							
BOND	D Family Saloon	SN.3102/37	SN.3102/42		DF.1111/00	8'6"					F.80		
	D Tourer	SN.3102/37	SN.3102/42		DF.1111/00	8'6"					F.80		
	F Saloon Coupe	SN.4302/00			DF.1111/00	8'6"					F.80		
	F Family Saloon	SN.4302/00			DF.1111/00	8'6"					F.80		
FRISKY	Sport Sprint	SN.3103/71			DF.1111/00	10'0"					F.100		
		SN.3103/71			DF.1111/00	10'0"					FE.70D		
INVACAR	Mk.10 Invalid Carriage	SC.1104/04			DF.1111/00	7'0"	BG.2507/07	52239	52219		F.70		
ISETTA	Standard Saloon 3 & 4 wheeler Plus Saloon 3 wheeler	SN.3119/00			DF.1104/00	8'0" RHS 7'0" LHS					F.80		
		SN.3119/00			DF.1104/00	8'0" RHS 7'0" LHS					F.80		
RELIANT	Regent Four (Export Markets Only) 3 Wheeler Regal Tourer	SN.3213/00	SN.3102/69		DF.2301/40	5'0"					F.50		
		SN.3102/68			DF.1113/00	5'4" RHS 7'6" LHS							
	3 Wheeler Regal Van & Pick-Up Regent Van with Ford 10 h.p.Engine	51-113-102-53	51-113-102-54		DF.1113/00	5'4"						F.50	
		SN.3213			DF.2301/40	5'0"						F.50	
STANLEY	Mk.6A, Mk.6B, Invalid Carriage	SN.3103/81			DF.1111/00	8'0"	34159	52239	31-84- 508-01	52246	F.80		
SCOOTACAR	3 Wheeler	SN.2103/72			DF.1111/02	6'6"					F.80		
TIPPEN	Delta Invalid Carriage	SN.3103/75			DF.1111/15	7'3"					F.80		

† For Separate Inner & Outer Flexible Drives See Chart I (Page 9)

# SMITHS

## MOTOR ACCESSORY DIVISION

HEAD OFFICE  
CRICKLEWOOD WORKS,  
LONDON, N.W.2.

Telephone : Gladstone 3333

SALES AND SERVICE  
50, OXGATE LANE,  
LONDON, N.W.2.

Telephone : Gladstone 8030

Telegrams : Speedofac, London. Telex 22671.